

Spring-Loaded Clamps



Now stocking popular Spring-Loaded Clamp sizes for quick shipment!

The Adjustable Advantage

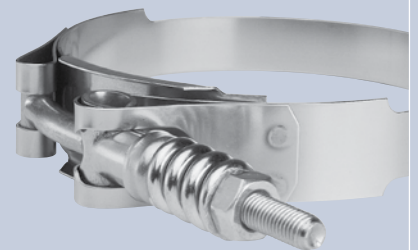
Clampco Spring-Loaded Clamps are designed to compensate for fluctuations in all types of hose line assemblies. When temperature and/or pressure changes cause hose lines to expand or contract, Clampco Spring-Loaded Clamps adjust accordingly to provide constant band tension.

Several additional design advantages make Clampco clamps the preferred solution for critical applications. With 300 series stainless steel bands and trunnions, Clampco Spring-Loaded Clamps provide high strength and corrosion resistance. Solid bands prevent hose extrusions, and rounded band edges protect soft hose materials. Plus, a low amount of installation torque results in high band tension. Band tension, not installation torque, is what ultimately produces desired clamping force.

Clampco now offers optional material and coating options for your high corrosion and heat applications.



CLAMPSCO CUSTOM



Custom Order

Are you looking for something special? For example, this clamp has a light-duty spring and a notched band. Contact Clampco with your hose application requirements. Our sales engineers will help you design a Spring-Loaded Clamp for your specific application.

We Customize. Call Today.

SPECIFICATIONS

FEATURES:

Clampco Spring-Loaded Clamps are manufactured with the following components:

- 300 Series Stainless Band, Trunion and Floating Bridge
- Band 0.025 in. Thick x 0.75 in. Wide
- 1/4-28 Zinc Plated Hardware and Springs



94331 & 94143 Series LIGHT-DUTY

Recommended Install Torque
40-45 in.-lbs.

Spring rate of 1900 lbs./in.
capable of generating a load of
300 lbs.

HOW TO ORDER:

Measure the outside diameter (O.D.) of your final hose assembly. Locate the Spring-Loaded Clamp part number with the closest nominal diameter. Recommended installation torque for both light- and heavy-duty clamps is 40-45 in.-lbs.

See page 34 for additional information on how to determine the nominal size for your hose clamp application.

Other sizes, styles, and materials are available upon request.



94158 Series HEAVY-DUTY

Recommended Install Torque
40-45 in.-lbs.

Spring rate of 1357 lbs./in.
capable of generating a load of
377 lbs.

ENGLISH (inches)			
PART NUMBER	NOMINAL DIAMETER	MINIMUM DIAMETER	MAXIMUM DIAMETER
94331-0125	1.25	1.12	1.32
94331-0138	1.38	1.26	1.45
94331-0162	1.62	1.50	1.69
94143-0194	1.94	1.82	2.12
94143-0225	2.25	2.06	2.36
94143-0238	2.38	2.19	2.49
94143-0244	2.44	2.25	2.55
94143-0250	2.50	2.31	2.61
94143-0256	2.56	2.37	2.67
94143-0275	2.75	2.56	2.86
94143-0278	2.78	2.59	2.89
94143-0281	2.81	2.62	2.92
94143-0288	2.88	2.69	2.99
Ⓢ 94143-0300	3.00	2.78	3.08
94143-0302	3.02	2.80	3.14
94143-0316	3.16	2.94	3.24
94143-0318	3.18	2.96	3.26
Ⓢ 94143-0325	3.25	3.03	3.33
94143-0328	3.28	3.06	3.36
94143-0330	3.30	3.08	3.38
Ⓢ 94143-0337	3.37	3.15	3.45
Ⓢ 94143-0344	3.44	3.22	3.52
94143-0348	3.48	3.26	3.56
94143-0350	3.50	3.28	3.58
94143-0353	3.53	3.31	3.61
94143-0356	3.56	3.34	3.64
94143-0375	3.75	3.53	3.83
94143-0378	3.78	3.56	3.86
94143-0385	3.85	3.63	3.93
94143-0400	4.00	3.78	4.08
94143-0411	4.11	3.89	4.19
Ⓢ 94143-0425	4.25	4.03	4.33
Ⓢ 94143-0428	4.28	4.06	4.36
Ⓢ 94143-0450	4.50	4.28	4.58
94143-0475	4.75	4.53	4.83
94143-0500	5.00	4.78	5.08
94143-0525	5.25	5.03	5.33
94143-0550	5.50	5.28	5.58
94143-0556	5.56	5.34	5.64
94143-0562	5.62	5.40	5.70
94143-0600	6.00	5.78	6.08
94143-0605	6.05	5.83	6.13
94143-0610	6.10	5.88	6.18
94143-0625	6.25	6.03	6.33
94143-0647	6.47	6.25	6.55
94143-0660	6.60	6.38	6.68
94143-0700	7.00	6.78	7.08
94143-0750	7.50	7.28	7.58
94143-0760	7.60	7.38	7.68
94143-0762	7.62	7.40	7.70
94143-0766	7.66	7.44	7.74
94143-0772	7.72	7.50	7.80
94143-0775	7.75	7.53	7.83
94143-0850	8.50	8.28	8.59
94143-0872	8.72	8.50	8.80

Ⓢ = Stock Items

ENGLISH (inches)			
PART NUMBER	NOMINAL DIAMETER	MINIMUM DIAMETER	MAXIMUM DIAMETER
94158-0234	2.34	2.11	4.46
94158-0284	2.84	2.62	2.96
Ⓢ 94158-0325	3.25	3.10	3.41
94158-0375	3.75	3.53	3.88
94158-0378	3.78	3.56	3.91
94158-0400	4.00	3.78	4.13
94158-0411	4.11	3.89	4.24
Ⓢ 94158-0428	4.28	4.12	4.43
Ⓢ 94158-0450	4.50	4.28	4.63
94158-0600	6.00	5.78	6.13
94158-0650	6.50	6.35	6.66

Ⓢ = Stock Items



*Now stocking popular
Spring-Loaded Clamp
sizes for quick shipment!*

